

# Save resources with effective device management



# Intelligent automatic fleet management

## Optimize fleet performance and productivity

Turn collected data into detailed device knowledge with our @Remote technology, whatever the size of your business. @Remote allows you to manage output devices in a cost-effective and automated way. The Embedded Remote Communication Gate is suitable for smaller businesses, whilst the External Remote Communication Gate can manage complex business requirements with up to 100 network devices.

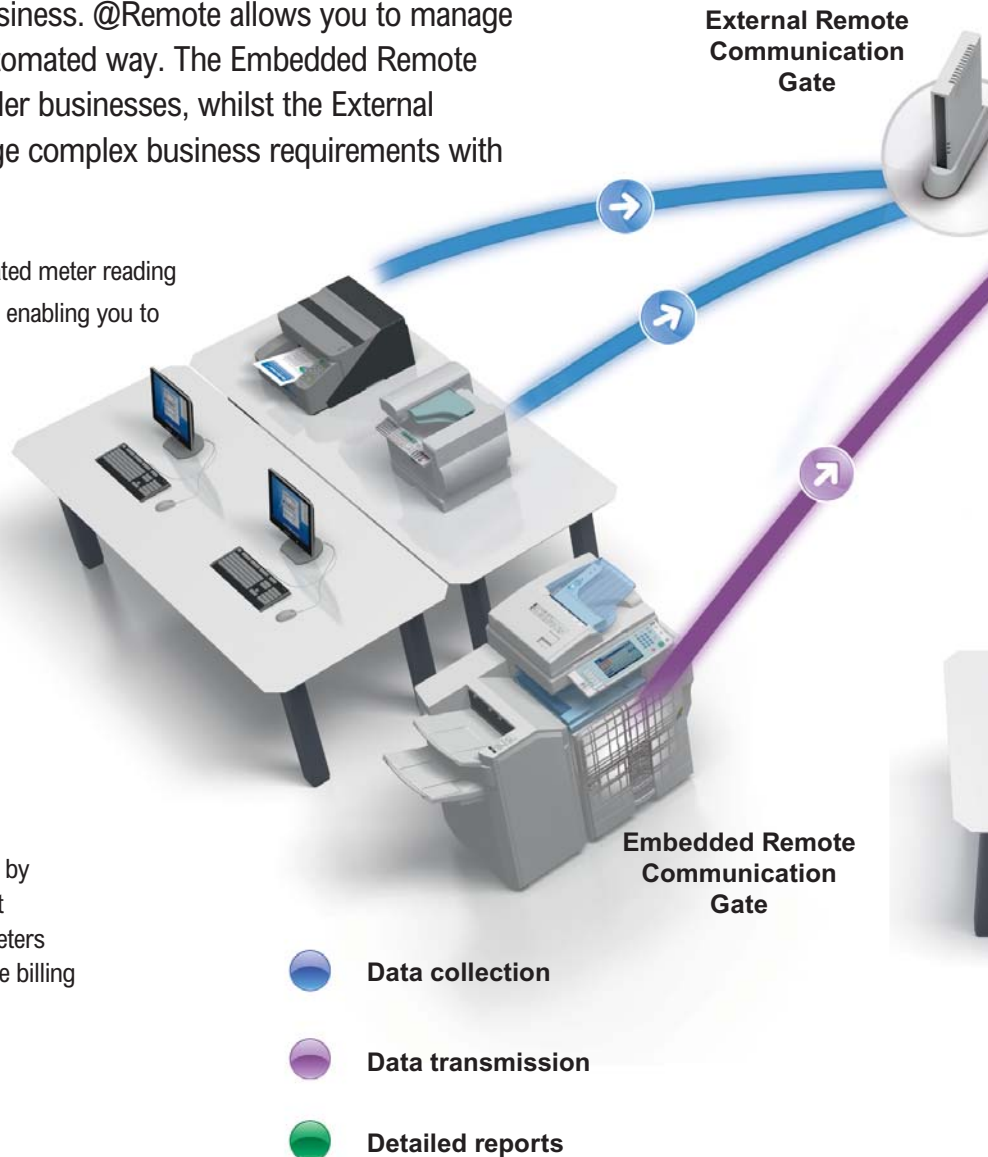
- Accurate meter counts are sent on-time with automated meter reading
- Access intelligent reports via @Remote's web portal, enabling you to boost device efficiency
- Maximize reliability with proactive support including call handling, automated toner replacement and firmware upgrades
- Reduce business resources to save time and cost

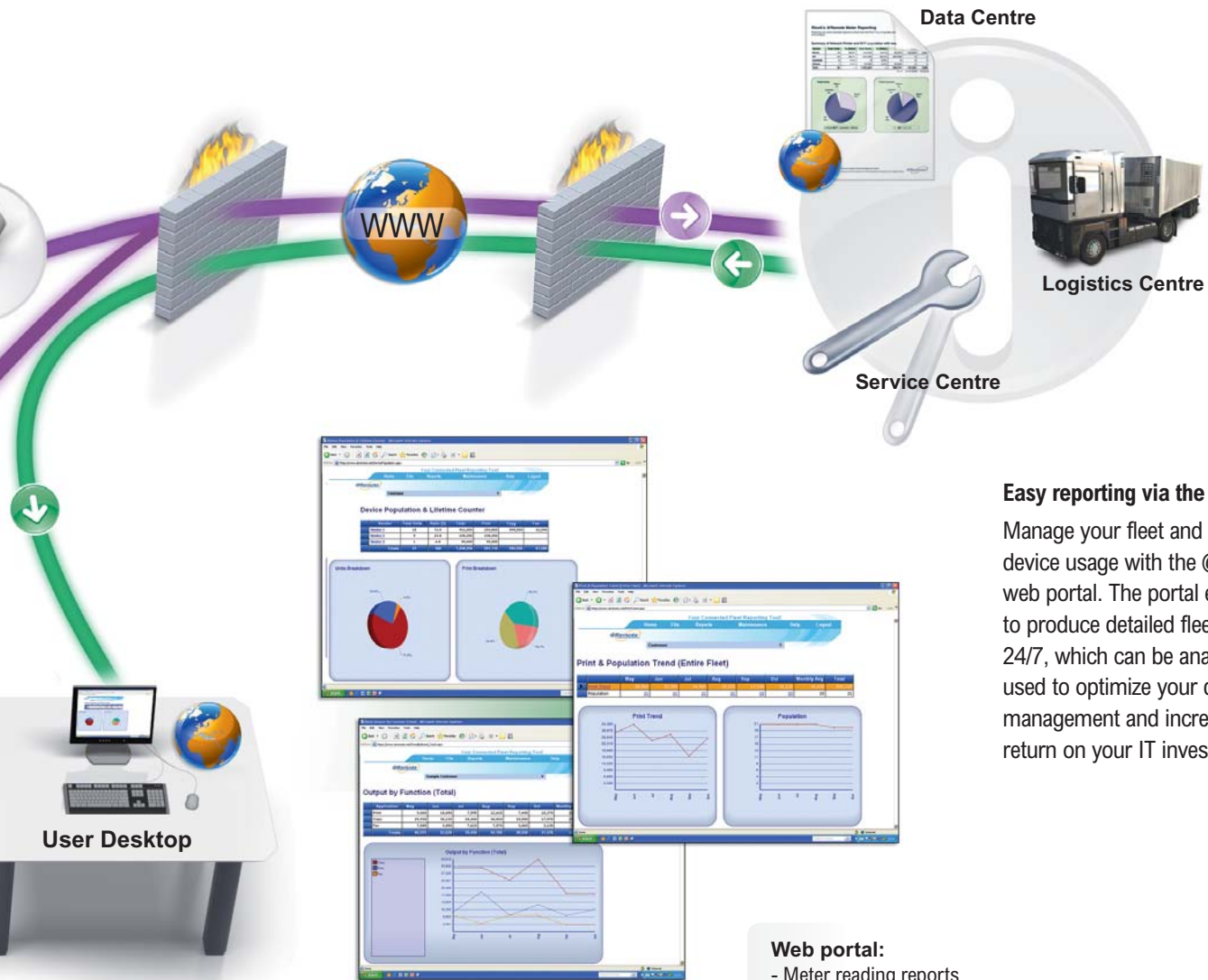
## Automated Meter Billing

Gain valuable time and cut administrative costs by optimizing your day-to-day device management processes. Your networked MFP and printer meters are automatically read and communicated to the billing centre.

## Automated Assistance

Designed for your convenience, @Remote incorporates a number of innovative, service related functionalities. Supply levels of toner are monitored and new supplies are automatically ordered when required. Service call notifications have also been automated, and a technician can be sent to increase your device uptime. In addition, selected devices can now be automatically upgraded with a firmware update from our data centre, without involving the user.





### Easy reporting via the web

Manage your fleet and maximize device usage with the @Remote web portal. The portal enables you to produce detailed fleet reports 24/7, which can be analyzed and used to optimize your device management and increase the return on your IT investment.

#### Web portal:

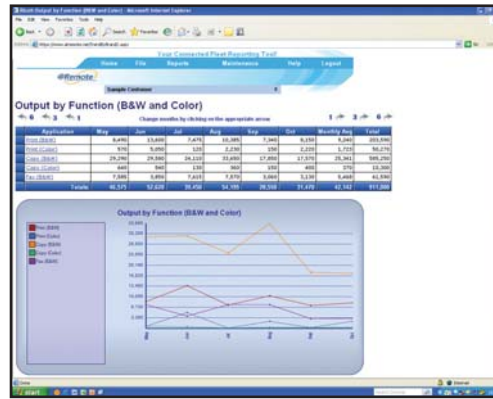
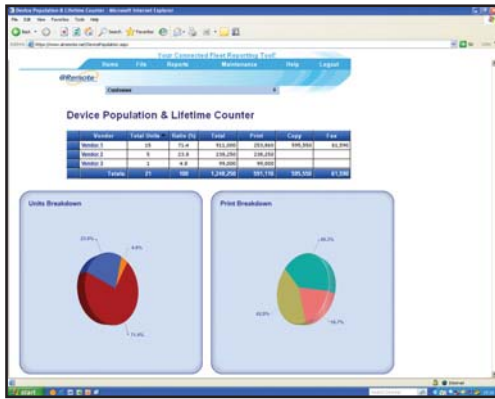
- Meter reading reports
- Device activity reports
- Accurate page volumes

### Secure Communications

For your peace of mind, @Remote securely collects data from your networked devices and transmits it to our data centre:

- Mutual Authentication (SSL) takes place before the information is exchanged through HTTPS.
- All information exchanged between the Communication Gate and the data centre is encrypted and routed through your organization's firewall for optimum security.
- You can access device information through the @Remote web portal, using your allocated user name and password.

# Generate reports to optimize your device management



## Internationally Certified

@Remote technology has obtained the ISO15408 certification (Common Criteria). ISO15408 is an internationally recognized standard that defines security requirements and establishes procedures for evaluating the security of IT systems and software.



## SPECIFICATIONS

### External Remote Communication Gate

<b>Type:</b>	External (Box) Type
<b>Interface:</b>	Ethernet interface x 2 (10BASE-T or 100BASE-TX)
<b>Managing Service:</b>	Networked MFPs, Copiers or Printers correspondent to the service
<b>Maximum number of devices:</b>	100
<b>Environment:</b>	10-32C (50-89.6F), 15-80% Relative Humidity
<b>Displays:</b>	3 LEDs, indicating power, system error and communication error
<b>Power:</b>	AC220-240V, 50Hz
<b>Power Consumption:</b>	20W or less
<b>Dimensions:</b>	Width 203mm (8") / Depth 145mm (5.8") / Height 31.5mm (1.2")
<b>Weight:</b>	0.6kg
<b>Security Certification:</b>	ISO/IEC15408 certified

### Embedded Remote Communication Gate

<b>Type:</b>	Embedded Type
<b>Interface:</b>	-
<b>Managing Service:</b>	Networked MFPs, Copiers or Printers correspondent to the service
<b>Maximum number of devices:</b>	1
<b>Environment:</b>	10-32C (50-89.6F), 15-80% Relative Humidity
<b>Displays:</b>	-
<b>Power:</b>	-
<b>Power Consumption:</b>	-
<b>Dimensions:</b>	-
<b>Weight:</b>	-
<b>Security Certification:</b>	-



All company, brand, product and service names are the property of and are registered trademarks of their respective owners.

Specifications, external appearance and the full range of options featured in this brochure are subject to change without notice.

Copyright © 2008 Ricoh Europe PLC. All rights reserved. This brochure, its contents and/or layout may not be modified and/or adapted, copied in part or in whole and/or incorporated into other works without the prior written permission of Ricoh Europe PLC.

[www.rexrotary.com](http://www.rexrotary.com)

